

MINING



CMO VALVES
manufacturing the valve you need

Our COMPANY

CMO is a company that **designs, manufactures and markets standard, and specialised valves**. Its comprehensive range of manufacturing allows one to cover many industrial applications and the ability to control all kinds of fluid.

Founded in February 1993, with a staff having **more than 40 years experience** in the design and manufacture of valves. This experience, satisfaction and quality of work is what has assisted the company in evolving into what it is today, continually developing new products to meet the demands of industry and our customer's needs.

Today, CMO is one of the **largest manufacturers** of valves in both **domestic** and **international** markets, with young and highly qualified staff continually willing to give the best service and attention to its customers.

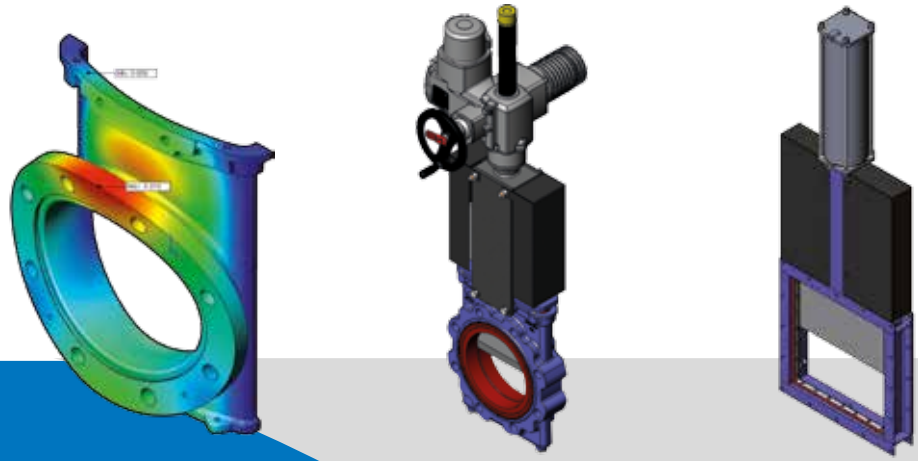




Summary

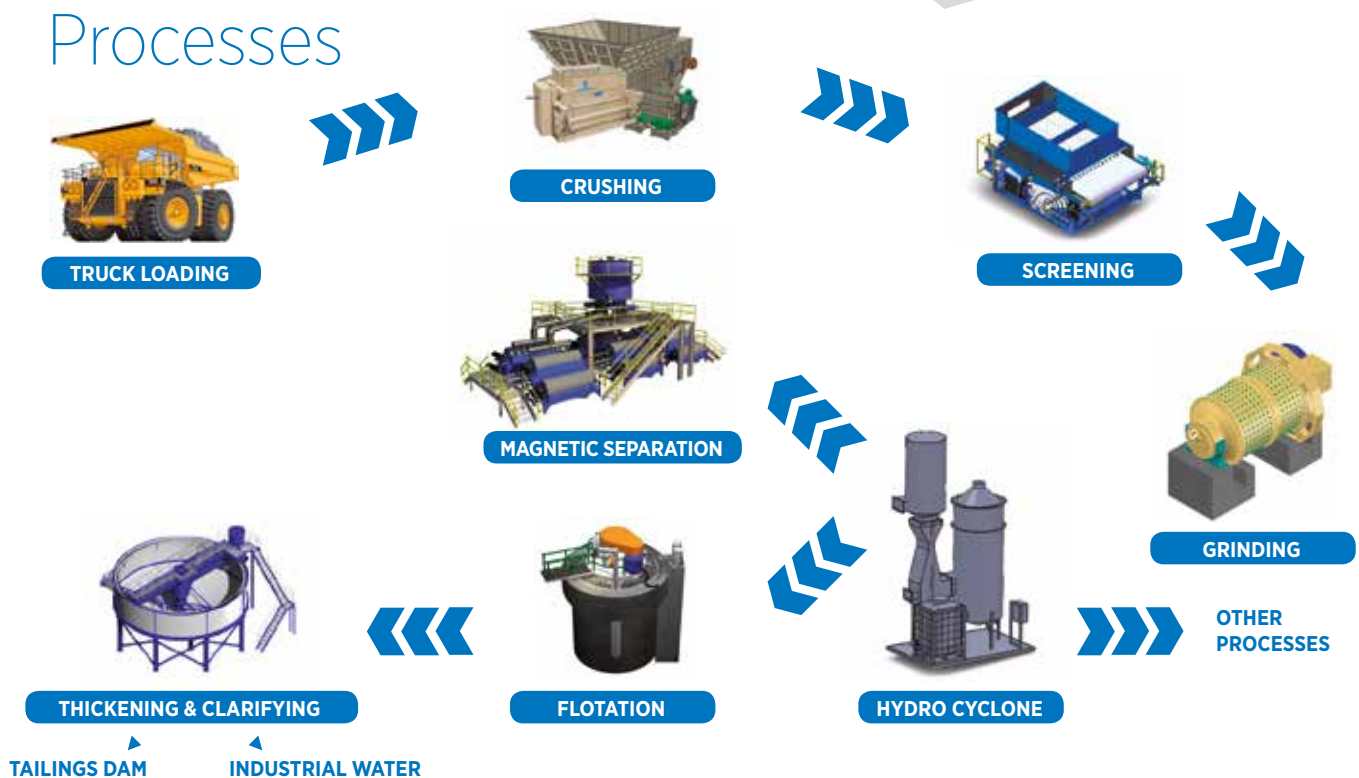
PROCESSES	04	AB series	11	MC/CA series	13
APPLICATIONS	05	L series	12	CT series	13
GL series	06	UB series	12	ME series	13
GA series	07	D series	12	BUTTERFLY DAMPER	13
GH series	08	F-FK series	12	KNIFE GATE DAMPER	13
T series	09	C series	12	REFERENCES	14
A series	10	R series	12	COUNTRIES	15

Innovation



CMO EXPORTS 85% OF ITS PRODUCTION TO MORE THAN 70 COUNTRIES ALL AROUND THE WORLD

Processes



More than 300 projects every year

- DAMS.
- WATER TREATMENT PLANTS.
- PUMPING STATIONS.

- HYDROPOWER PLANTS.
- DESALINATION PLANTS.
- PAPER & PULP.

- CEMENT PLANTS.
- MINING & SLURRIES.
- OIL & GAS.



Applications

		GL	GA	GH	T	A	AB
GM	Acid washing	•	•	•			
CM	Acidic process slurry	•	•	•		•	•
CM	Barren organic					•	•
GM	Caustic cyanide				•	•	•
CM	CCD underflow			•		•	•
CM	CCD wash					•	•
IM	Column flotation	•	•	•	•	•	•
CM	Concentrated H2SO4					•	•
CM/GM/IM	Cyclones	•	•	•		•	•
IM	Desliming					•	•
IM	Dewatering plant	•	•	•		•	•
CM	Electrolyte					•	•
IM	Feed/process water				•	•	•
CM/GM	Filters	•	•		•	•	•
CM/GM/IM	Flotation separators	•	•		•	•	•
GM	Flocculent	•	•		•	•	•
IM	Grinding circuit	•	•	•		•	•
GM	Heat exchange oil	•	•	•			
IM	High pressure booster			•	•		
GM	Hopper storage	•	•		•	•	•
CM/GM/IM	Lime slurry	•	•	•			
GM	Loaded carbon	•	•	•	•	•	•
CM	Loaded organic					•	•
IM	Magnetic separation	•	•	•	•	•	•
CM/GM/IM	Mill discharge	•	•	•		•	•
CM/GM	Mill feed	•	•	•			
GM	Ore feed	•	•		•	•	•
GM	Paste fill plant & pipeline	•	•	•	•		
GM	Pregnant solution	•	•	•	•		
GM	Process / Raw	•	•	•	•	•	•
CM/GM/IM	Process slurry	•	•	•	•	•	•
CM/GM/IM	Process water				•	•	•
CM/GM/IM	Pump isolation	•	•	•	•	•	•
GM	Recirculation	•	•		•	•	•
CM	Re-use water				•	•	•
CM	Screens	•	•	•	•	•	•
CM	Slimes recovery	•	•	•			
CM/GM/IM	Slurry pipeline	•	•	•		•	•
CM/GM/IM	Slurry tailings	•	•	•	•		
CM/GM/IM	Stock tanks	•	•	•	•	•	•
CM/GM	Sump isolation	•	•	•	•	•	•
CM/GM/IM	Tailings	•	•	•	•	•	•
CM/GM	Tank blanking	•	•	•			
CM/GM	Thickener underflow			•	•		
IM	Thickeners	•	•	•	•	•	•
CM/GM	Thickener isolation	•	•	•	•	•	•
CM/GM/IM	Water	•	•	•	•	•	•
GM	Water injection	•	•	•	•	•	•

CM Copper Mining GM Gold Mining IM Iron Ore Mining

	20% SOLIDS	30% SOLIDS	>40% SOLIDS	END OF LINE
GL	•	•	•	
GA	•	•	•	•
GH	•	•	•	
T	•	R		
A*	•	R		
AB*	•	R		

*c/ deflector



Sealing type

	NATURAL RUBBER	NITRILE	ETHYLENE PROPYLENE	NEO-PREN	FLUOR CARBON
DENOMINATION	PRG	NBR	EPDM	CR	VITON
SHORE A HARDNESS	65 (±5)	65 (±5)	65 (±5)	65 (±5)	65 (±5)
ELASTICITY	250	200	300	280	240
ABRASSION	MB	MB	MB	MB	MB
IMPACT	MB	MB	MB	B	MB
CHEMICAL RESISTANCE	R	R	B	B	MB

R Regular B Good MB Very good



CMO's GL Series Knife Gate Valve is known as a LUG/Wafer, Semi-LUG or Narrow Body Knife Valve. It has an easily recognisable robust design and a thick knife, with renewable sleeves made from carefully studied high-resistance material, therefore guaranteeing excellence in mining services. Suitable for BIDIRECTIONAL operation, symmetrical body, lightweight and minimum space required for installation.

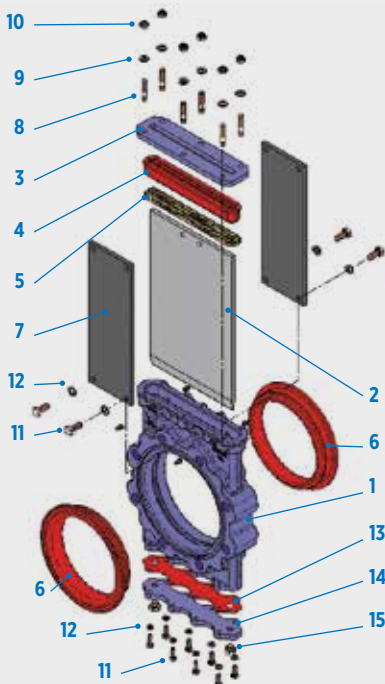
Suitable for working with abrasive and corrosive fluids thanks to the wide range of materials which the bodies, knives and sleeves can be made from, whilst turbulence, which can lead to premature wear inside the valve and in the nearby pipe system, can be eliminated with the shut-

off valve. This condition also ensures low load loss, thus allowing optimal performance of the pumping and conveyance systems.

For proper installation and operation, this valve should be mounted between two connection flanges which will compress the sleeves or seals, thus creating a sealtight fitting and allowing the knife to travel smoothly in opening and closing. Its main use is in line services and applications where the piping can be depressurised and drained in disassembly and maintenance. The CMO standard for GL Series 2" to 24" (DN-50 to DN-600) is 10 bars (150 PSI), making this product one of the most robust and reliable in this series.

Common applications

- Pump isolation.
- Storage tank outputs.
- Hydrocyclone discharge.
- Flotation cells.
- Thickener tunnels.
- Tailing pipelines.
- Filter isolation.
- Mill discharge.
- Junctions and tie-ins.
- Sand and sludge conveying.
- Slurry pipelines.
- Pneumatic slurry conveying.
- Distribution tanks.



Standard components

DESCRIPTION	GJS-500	CF8M
1 Body	GJS-500	CF8M
2 Knife	AISI-304	AISI-316
3 Packing gland	GJS-500	CF8M
4 Packing	EPDM	
5 Packing	GREASED PACKING	
6 Sleeve	NATURAL RUBBER + F-1	
7 Support	S275JR	
8 Stud	F-111 ZINC	AISI-316
9 Washer	5.6 ZINC	A-4
10 Self-locking nut	5.6 ZINC	A-4
11 Screw	5.6 ZINC	A-2
12 Washer	5.6 ZINC	A-2
13 Bottom cover joint	A-2	A-4
14 Bottom cover	GJS-500	CF8M
15 Screw plug	A-2	A-4

DIMENSIONS:

DN50 to DN1400

(bigger under request).

(ΔP) PRESSURE:

DN50 to DN600 (2" - 24")

10 kg/cm² - 150 psi.

DN700 to DN1400 (28" - 56")

6 kg/cm² - 90 psi.

FLANGES DRILLING:

ANSI B16.5 (150 LB) & PN 10.

OTHER:

DIN PN 16, DIN PN 6, DIN PN25, Australian standard...

OTHER MATERIALS:

AISI 316Ti, Duplex, 254SMO, Uranus B6, Ni-Resist, Ductile Ni-Resist, other under request.

CMO's GA Series Knife Gate Valve is considered to be a High Performance Knife Valve. Robustly designed with renewable reinforced sleeves made from carefully studied high-resistance material, therefore guaranteeing maximal performance in mining services. Bidirectional service and symmetrical body.

Suitable for working with highly abrasive fluids, whilst turbulence, which can lead to premature wear inside the valve and in the nearby pipe system, can be eliminated with the shut-off valve. This condition also ensures very low load loss, thus

allowing optimal performance of the pumping and conveyance systems.

Its most outstanding feature is the design of the sleeves, which are permanently adjusted through a compressor flange which forms part of the connection flange. For this reason, this valve is suitable for use as an end-of-line in pressurised systems or systems with load, and is ideal in work areas where piping sections, hoses, movable pump units and pools need to be assembled and taken down for maintenance or operation.



Common applications

- Pump isolation.
- Storage tank outputs.
- Hydrocyclone discharge.
- Flotation cells.
- Thickener tunnels.
- Tailing pipelines.
- Filter isolation.
- Mill discharge.
- Junctions and tie-ins.
- Sand and sludge conveying.
- Slurry pipelines.
- Pneumatic slurry conveying.
- Distribution tanks.

Standard components

DESCRIPTION	GJS-500	CF8M
1 Body	GJS-500	CF8M
2 Knife	AISI304/ AISI316*	AISI316
3 Packing gland	GJS-500	CF8M
4 Packing	EPDM	
5 Packing	GREASED PACKING	
6 Sleeve	NATURAL RUBBER + F-1	
7 Sleeve retaining	NATURAL RUBBER + F-1	
8 Support	S275JR	
9 Stud	F-111 ZINC	AISI-316
10 Washer	5.6 ZINC	A-4
11 Self-locking nut	5.6 ZINC	A-4
12 Screw	5.6 ZINC	A-2
13 Washer	5.6 ZINC	A-2
14 Screw	A-2	A-4
15 Nut	A-2	A-4
16* Screw plug	A-2	A-4

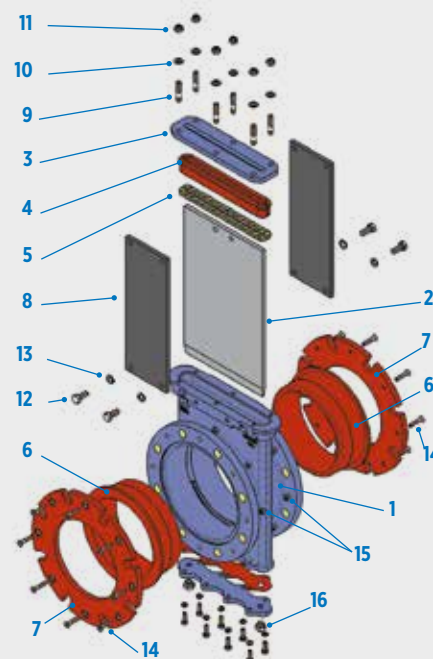
DIMENSIONS:
DN50 to DN1400
(bigger under request).

(ΔP) PRESSURE:
DN50 to DN600 (2" - 24")
10 kg/cm² - 150 psi.
DN700 to DN1400 (28" - 56")
6 kg/cm² - 90 psi.

FLANGES DRILLING:
ANSI B16.5 (150 LB) & PN 10.

OTHER:
DIN PN 16, DIN PN 6, DIN PN25,
Australian standard...

OTHER MATERIALS:
AISI 316Ti, Duplex, 254SMO,
Uranus B6, Ni-Resist, Ductile Ni-Resist, other under request.





HIGH PRESSURE SERVICE

CMO's GH Series Knife Gate Valve is defined as a High Pressure LUG-Type Knife Valve (20 bars or over). It has a robustly designed body for working at maximal performance under high pressures, with renewable sleeves made from carefully studied high-resistance material, therefore guaranteeing excellence in mining services. Suitable for bidirectional operation, symmetrical body, working pressures available on request up to 52 bars (780 PSI).

Suitable for working with abrasive and corrosive fluids thanks to the wide range of materials which the bodies, knives and sleeves can be made from, whilst turbulence, which can lead to premature wear inside the valve and in the nearby pipe system, can be eliminated with the shut-

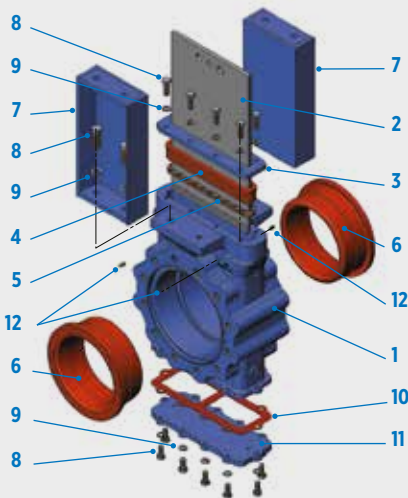
off valve. This condition also ensures low load loss, thus allowing optimal performance of the pumping and conveyance systems.

For proper installation and operation, this valve should be mounted between two connection flanges which will compress the sleeves or seals, thus creating a sealtight fitting and allowing the knife to travel smoothly in opening and closing. For specific application in high pressure services which require a robust, well manufactured blocking element. For application in conveying solutions with a high concentration of high pressure solids such as slurry pipelines, tailing pipelines, high pressure pulp pump impulses, drainage in high pressure lines, etc.

Common applications

- High pressure pump isolation.
- Tailing pipelines.
- Mill discharge.
- Sand and sludge conveying.
- Slurry pipelines.
- Drainage in high pressure lines.

Standard components



DESCRIPTION	GJS-500
1 Body	GJS-500
2 Knife	AISI304 / DUPLEX
3 Packing gland	S275JR
4 Joint	NATURAL RUBBER
5 Packing	GREASED PACKING
6 Bush	NATURAL RUBBER + F-1
7 Support	S275JR
8 Screw	5.6 ZINC
9 Washer	ST ZINC
10 Cover joint	EPDM
11 Lower cover	S275JR
12 Greaser	STEEL

DIMENSIONS:
DN80 to DN900
 (bigger under request).

(ΔP) PRESSURE:
DN80 to DN900 (3" - 36")
 21 kg/cm² - 300 psi.
 >300 psi under request up to 750 psi.

FLANGES DRILLING:
 ANSI B16.5 (300 LB) & PN 25.

OTHER:
 Australian standard, PN 40...

OTHER MATERIALS:
A216WCB, AISI316Ti, DUPLEX, 254SMO, Uranus B6, Ni-Resist, Ductile Ni-Resist, ... under request.

PROCESS WATER AND GENERAL SERVICES

CMO's T Series Knife Gate Valve is built to comply with TAPPI Directives TIS 405-8 and MSS-SP-81. Known as LUG-Type Knife Valve. Its standard design corresponds to a UNIDIRECTIONAL service valve, although we can also prepare this unit for BIDIRECTIONAL service. As with all our products, CMO's robust design is included as standard.

Suitable for Industrial Water, Reclaimed Water, Muddy Water, Industrial Liquid Waste services and, in general, for all fluids containing a solids load of up to 6%.

It is an ideal product for reliable use in water distribution and sectorisation systems, operation loops, run-offs, drains, etc. Its design allows work within a maximum pressure range of 150 PSI (10 bars) to 24".

This valve can be used with all types of actuators and automat devices. Manual Chains, Gearboxes, Pneumatic Actuators, Hydraulic Actuators and Electric Actuators can be easily fitted in the modular structure.



Common applications

- Pump isolation.
- Storage tank outputs.
- Water supply systems.
- Water discharge, impulses and drainage.
- Thickener tunnels.
- Filter isolation.
- Mill water injection.
- Junctions and tie-ins.
- Industrial liquid waste conveying.
- Water control panels.
- Sealing water systems.
- Lime slurry conveying.

Standard components

DESCRIPTION	A216WCB	CF8M
1 Body	A216WCB	CF8M
2 Knife	AISI-304	AISI316
3 Guide		RCH 1000
4 Packing gland		CF8M
5 Packing		SYNT + PTFE
6 Joint		EPDM
7 Support		S275JR
8 Stud	F-111 ZINC	AISI-316
9 Washer	ST ZINC	A-4
10 Self-locking nut	5.6 ZINC	A-4
11 Screw	5.6 ZINC	A-2
12 Washer	ST ZINC	A-2
13 Seat		EPDM
14 Socket		AISI-316

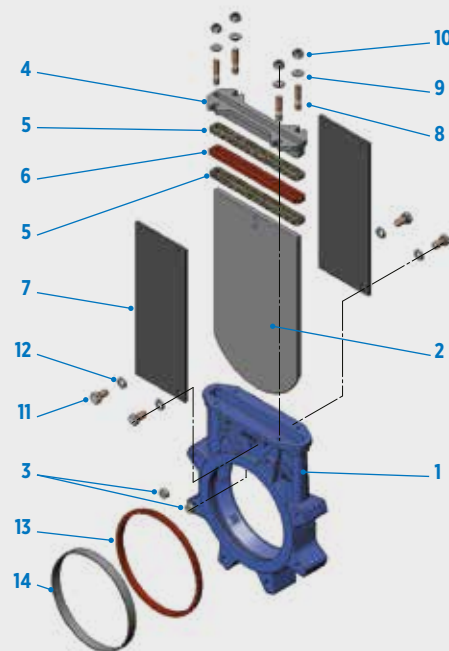
DIMENSIONS:
DN50 to DN1200 (2" - 48")
 (otras dimensiones consultar).

(ΔP) PRESSURE:
DN50 to DN600 (2" - 24")
 10 kg/cm² - 150 psi.
DN700 to DN900 (28" - 36")
 8 kg/cm² - 120 psi.
DN1000 to DN1200 (40" - 48")
 4 kg/cm² - 60 psi.

FLANGES DRILLING:
 ANSI B16.5 (150 LB) & PN 10.

OTHER:
 PN6, PN25, Jis 10k, Australian standard...

OTHER MATERIALS:
AISI316Ti, DUPLEX, 254SMO, Uranus B6, Ni-Resist, Ductile Ni-Resist,... under request.





PROCESS WATER AND GENERAL SERVICES

CMO's A Series Knife Gate Valve is known as WAFER-Type Knife Valve. Suitable for all kinds of medium and low pressure use whenever UNIDIRECTIONAL service applications are required and allowed.

Its standard configuration is suitable for Industrial Water, Reclaimed Water, Muddy Water, Industrial Liquid Waste services and, in general, for all fluids containing a solids load of up to 5%. It is an ideal product for reliable use in industrial water distribution and sectorisation systems.

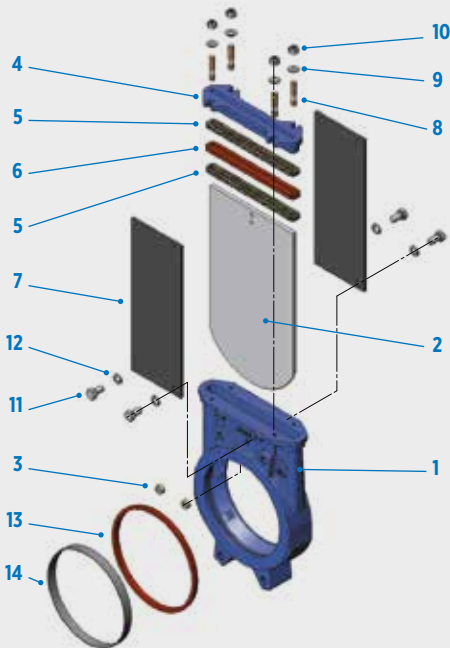
It allows the use of Polyurethane, UHMWP, Rubber-Coated Metal and/or Hard Metal (e.g. Ni-Hard) baffles for longer working life of the bodies and seals, with this configuration also allowing applications in fluids with medium solids loads in low-pressure sectors which require an economical, reliable product.

This valve can be used with all types of actuators and automat devices. Manual Chains, Gearboxes, Pneumatic Actuators, Hydraulic Actuators and Electric Actuators can be easily fitted in the modular structure.

Common applications

- Pump isolation.
- Storage tank outputs.
- Water supply systems.
- Water discharge, impulses and drainage.
- Thickener tunnels.
- Filter isolation.
- Mill water injection.
- Junctions and tie-ins.
- Industrial liquid waste conveying.
- Water control panels.
- Sealing water systems.
- Lime slurry conveying.

Standard components



DESCRIPTION	GJL-250	CF8M
1 Body	GJL-250	CF8M
2 Knife	AISI-304	AISI-316
3 Guide	RCH 1000	
4 Packing gland	GJS-500	CF8M
5 Packing	SYNT + PTFE	
6 Joint	EPDM	
7 Support	S275JR	
8 Stud	F-111 ZINC	AISI-316
9 Washer	ST ZINC	A-4
10 Self-locking nut	5.6 ZINC	A-4
11 Screw	5.6 ZINC	A-2
12 Washer	ST ZINC	A-2
13 Seat	EPDM	
14 Socket	AISI-316	

DIMENSIONS:

DN50 to DN2000 (2" – 80")
(bigger under request).

(ΔP) PRESSURE:

DN50 to DN150 (2" – 8") 10 kg/cm².

DN200 (8") 8 kg/cm².

DN250 to DN300 (10" – 12") 6 kg/cm².

DN350 to DN400 (14" – 16") 5 kg/cm².

DN450 to DN600 (18" – 24") 3 kg/cm².

DN700 to DN1400 (28" – 56") 2 kg/cm².

FLANGES DRILLING:

ANSI B16.5 (150 LB) & PN 10, PN6,
PN25, Jis 10k, Australian standard...

OTHER MATERIALS:

AISI316Ti, DUPLEX, 254SMO, Uranus B6, Ni-Resist, Ductile Ni-Resist,... under request.

PROCESS WATER AND GENERAL SERVICES

CMO's AB Series Knife Gate Valve is known as WAFER-Type Knife Valve. Suitable for all kinds of medium and low pressure use whenever BIDIRECTIONAL service applications are required and allowed.

Its standard configuration is suitable for Industrial Water, Reclaimed Water, Muddy Water, Industrial Liquid Waste services and, in general, for all fluids containing a solids load of up to 4%. It is an ideal product for reliable use in bidirectional industrial water distribution and sectorisation systems.

It allows the use of Polyurethane, UHMWP, Rubber-Coated Metal and/or Hard Metal (e.g. Ni-Hard) baffles for longer working life of the bodies and seals, with this configuration also allowing applications in fluids with medium solids loads in low-pressure sectors which require an economical, reliable product.

This valve can be used with all types of actuators and automat devices. Manual Chains, Gearboxes, Pneumatic Actuators, Hydraulic Actuators and Electric Actuators can be easily fitted in the modular structure.

Common applications

- Pump isolation.
- Storage tank outputs.
- Water supply systems.
- Water discharge, impulses and drainage.
- Thickener tunnels.
- Filter isolation.
- Mill water injection.
- Junctions and tie-ins.
- Industrial liquid waste conveying.
- Water control panels.
- Sealing water systems.
- Lime slurry conveying.



Standard components

DESCRIPTION	GJL-250	CF8M
1 Body	GJL-250	CF8M
2 Knife	AISI-304	AISI-316
3 Packing gland	GJS-500	CF8M
4 Packing	SYNT + PTFE	
5 Joint	EPDM	
6 Seat	EPDM + AISI-304	EPDM + AISI-316
7 O-ring	NITRILE	
8 Support	S275JR	
9 Stud	F-111 ZINC	AISI-316
10 Washer	ST ZINC	A-4
11 Self-locking nut	5.6 ZINC	A-4
12 Screw	5.6 ZINC	A-2
13 Washer	ST ZINC	A-2

DIMENSIONS:

DN50 to DN600 (2" - 24")
(bigger Series UB).

(ΔP) PRESSURE:

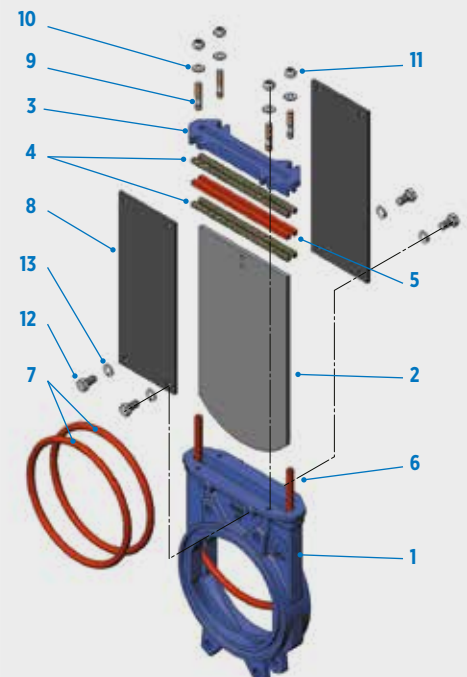
DN50 to DN150 (2" - 8") 10 kg/cm².
DN200 (8") 8 kg/cm².
DN250 to DN300 (10" - 12") 6 kg/cm².
DN350 to DN400 (14" - 16") 5 kg/cm².
DN450 to DN600 (18" - 24") 3 kg/cm².

FLANGES DRILLING:

ANSI B16.5 (150 LB) & PN 10, PN6, PN25, Jis 10k, Australian standard...

OTHER MATERIALS:

AISI316Ti, DUPLEX, 254SMO, Uranus B6, Ni-Resist, Ductile Ni-Resist,... under request.



Other products

L series



DESCRIPTION:
Bidirectional knife gate valve. Two-piece cast body, joined by screws, with internal guides for smooth movement of gate during operation. Provides high flow rates with low pressure drop.

DIMENSIONS:
DN50 - DN2000.

APPLICATIONS:
Suitable for liquids with a maximum of 20% suspended solids. It is also recommended in gravity discharge applications for solids and fine particles, because of its half-moon shape which cuts the flow and high consistency fluids.

(ΔP) PRESSURE:
DN50-DN150: 10 Kg/cm².
DN200: 8 Kg/cm².
DN250-DN300: 6 Kg/cm².
DN350-DN400: 5 Kg/cm².
DN450-DN600: 3 Kg/cm².
DN700-DN1400: 2 Kg/cm².

UB series



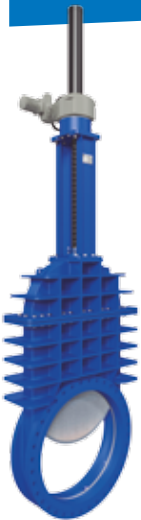
DESCRIPTION:
Bidirectional wafer-design knife gate valve. Two-piece cast body, joined by screws, with internal guides for smooth movement of through conduit during operation. Provides high flow rates with low pressure drop.

DIMENSIONS:
DN50 - DN2000.

APPLICATIONS:
Suitable to work with clean or bland solids concentration liquids.

(ΔP) PRESSURE:
DN50-DN600: 10 Kg/cm².
DN700-DN1400: 2-10 Kg/cm².
DN1600-DN2000: 2-6 Kg/cm².

D series



DESCRIPTION:
Unidirectional flanged gate valve (bidirectional option to order), designed for high pressure applications, with self-cleaning seal. Single piece die-cast body with screwed-down bonnet and wedges to guarantee the seal.

DIMENSIONS:
DN50 - DN2000.

APPLICATIONS:
Suitable for working with clean liquids or liquids with a concentration of solids:

(ΔP) PRESSURE:
PN 2,5 - PN 100.

F-FK series



DESCRIPTION:
Unidirectional wafer-design knife gate valve. One-piece cast body with guides to support gate and seat wedges. Provides high flow rates with low pressure drop.

DIMENSIONS:
DN50 - DN600.

APPLICATIONS:
Suitable for working with dry products like powder and grain. It is generally used for gravity discharge of dry solids.

(ΔP) PRESSURE:
DN50-DN125: 3 Kg/cm².
DN150: 2,5 Kg/cm².
DN200-DN300: 2 Kg/cm².
DN350-DN400: 1,3 Kg/cm².
DN450-DN600: 1 Kg/cm².

C series



DESCRIPTION:
Unidirectional knife gate valve. Mechanically - welded body. Various seat and packing materials available. Face-to-face dimension in accordance with CMO standard, it is also possible to build the product according to the customer's needs.

DIMENSIONS:
125x125 - 1400x1400. Larger sizes on request.

APPLICATIONS:
Suitable for solids, also recommended in gravity discharge applications for fluids with high solid content.

(ΔP) PRESSURE:
Standard: 0,6 Kg/cm². For larger pressures, consult CMO.

R series



DESCRIPTION:
Wafer swing or tilting disc check valve (can be manufactured with flanges on request). One-piece cast body which provides easy evacuation of solid particles contained in the fluid. Can be supplied with auxiliary spring to obtain faster sealing.

APPLICATIONS:
Suitable for liquids that contain a maximum of 5% suspended solids.

(ΔP) PRESSURE:
DN50-DN600: maximum PN 64.
DN700-DN1200: maximum PN 25.

DIMENSIONS:
DN50 - DN1200.

MC/CA Penstock series



DESCRIPTION:
Square or rectangular type Wall Penstock 4 side sealing. Fabricated Construction Different dimensions, water columns and actuators.

APPLICATIONS:
Water treatment plants, hydropower stations, effluent handling.....

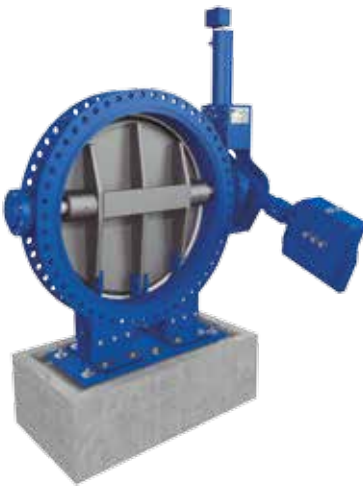
CT Taintor Penstock series



DESCRIPTION:
Radial gate tight 3 sides (surface)- 4 sides (bottom) sealing. Construction, dimensions, materials and design pressure adapted to customer's requirements. Radial opening and closing against a turning shaft. Actuators: hydraulic, electric.

APPLICATIONS:
Surface radial gate: Level control of fluids.
Bottom radial gate: Discharge of water in water dams...

ME Butterfly series



DESCRIPTION:
Flanged butterfly valve with single or double eccentricity. Construction, dimensions, materials and design pressure adapted to customer's requirements. Actuators: Hydraulic, Electric, Manual.

DIMENSIONS:
DN50 - DN3000.

APPLICATIONS:
Hydroelectric power plants, water pumping applications, combined cycle thermal power plants...

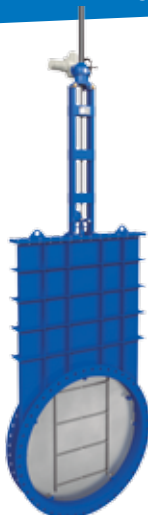
Butterfly Damper



DESCRIPTION:
Single blade Round flanged or wafer butterfly damper valve. Dimensions, materials, design pressure and tightness adapted to customer's requirements. Actuators: Manual, electric, pneumatic.

APPLICATIONS:
Pneumatic transports, exhaust gas control on in cement, steel, chemical, power plants...

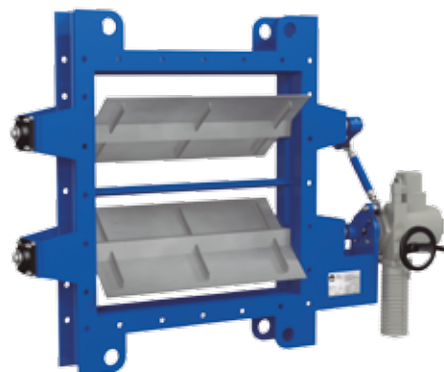
Knife Gate Damper



DESCRIPTION:
Round, Square or rectangular damper knife gate valve. Dimensions, materials, design pressure and tightness adapted to customer's requirements. Actuators: Manual, electric, pneumatic...

APPLICATIONS:
Pneumatic transports, exhaust gas control in cement, steel, chemical, power plants...

Other dampers



**CMO IS ONE OF THE
LEADING SUPPLIERS
OF SLURRY VALVES ALL
AROUND THE WORLD.**

References



If more detailed references, please contact **CMO**. In many countries we do have many valves installed through our distributors but do not have specific references



Countries

AUSTRALIA

- **Newmont**,
Boddington Gold Mine.
- **BHP Billiton**,
Worsley Alumina Refinery.
- **FMG**,
Cloud Break Iron Ore Mine.
- **Sandfire Resources**,
Degrussa Copper Mine.
- **Regis Resources**,
Garden Well & Duketon Gold
Mines.
- **Anglogold Ashanti**,
Tropicana Gold Mine.

BOTSWANA

- **De Beers Diamonds**.
- **Opapa Diamonds**.

BULGARIA

- **Chepelopech Mining**.

CHILE

- **Codelco Norte**,
Chuquibambilla.
- **Minera Escondida**.
- **Minera Collahuasi**.
- **Minera Los Pelambres**.
- **Codelco Andina**.

- **Codelco Teniente**.
- **Compañía Minera del Pacifico**.
- **Minera Esperanza**.

EGYPT

- **Centamin**,
Sukari Gold Mine.

SPAIN

- **Riotinto Mines**.
- **Bierzo Coal Mines**.

FINLAND

- **Kevitsa Mine**.

GHANA

- **Newmont, Ahafo Gold Mine**.
- **Newmont, Gold Mine**.

INDONESIA

- **Newcrest**, Gosowong Gold
Mine.
- **Archipelago Resources**,
Toka Tindung Gold Mine.
- **Straits Resources**,
Mt Muro Gold Mine.

KHAZAKHASTAN

- **Zhezkazgan Complex**.

LESOTHO

- **Letsing Diamonds**.

MOROCCO

- **OCP Phosphates Projects**.

MOZAMBIQUE

- **Moma Titanium Mine**.

NAMIBIA

- **Langer Heinrich Uranium**.
- **Rossing Uranium**.

NORWAY

- **Sydvaranger Iron Ore Mine**.

SOUTH AFRICA

- **Samancor Chrome Mine**.
- **Impala Platinum**.
- **Xstrata Coal**.
- **BHP Billiton Manganese**.
- **Various Gold Mines Anglo
Ashanti**.
- **Voorspoed Welkom Gold**.

ZIMBAWE

- **Anglo Platinum**.



www.cmovalves.com



CMO VALVES

**CMO HEADQUARTERS
MAIN OFFICES & FACTORY**

Amategi Aldea, 142
20400 Tolosa
Guipuzcoa (Spain)

Tel.: (+34) 943 67 33 99
Fax: (+34) 943 67 24 40

cmo@cmovalves.com
www.cmovalves.com

CMO MADRID

C/ Rumania, 5 - D5 (P.E. Inbisa)
28802 Alcalá de Henares
Madrid (Spain)

Tel.: (+34) 91 877 11 80
Fax: (+34) 91 879 79 94

cmomadrid@cmovalves.com
www.cmovalves.com

CMO SOUTH AMERICA

Bodegas Mersan
Avenida Lo Espejo 01565
Pabellón 8, Local 0821-0823
Santiago de Chile (Chile)

Tel.: (+56 2) 255 94 775

ventas@cmosudamerica.com
www.cmosudamerica.com
